

Organizers



Co-organizing



Competition Regulations(Chess)

Organizers	:	Children Mental and Learning Ability Development Association & Hong Kong Youth Chess Academy			
Co-organizers	:	Hong Kong China Chess School & Hong Kong Chess Sports Development Association			
Date and Time	:	Other Groups :	4 April 2025 (Friday/ Holiday)	9:30 am – 5:00 pm	The venue opens for check-in 30 minutes before the start of competition.
		Senior College & University Group :	6 April 2025 (Sunday)	9:30 am – 5:00 pm	
Venue	:	Other Groups :	Hong Kong Science Park Exhibition Hall(12W) and Conference Hall(10W) (Address: Building 12W & 10W, Hong Kong Science Park, Shatin, Hong Kong)		
		Senior College & University Group :	Hong Kong Youth Chess Academy (Address: Room C, 13th Floor, Lladro Centre, 72 Kai Yip Road, Kwun Tong)		
Groups	:	Chess is divided into four groups* : Junior Primary: P.1 to P.3 Junior Secondary: F.1 to F.3 Senior Primary: P.4 to P.6 Senior College & University: F.4(Esf year11) to U <i>*Or corresponding grades of non-local curriculum</i>			
Format	:	The Swiss system will be used, and there will be seven rounds of competition. Each player has 15 mins+5sec/move.			
Rules	:	The latest international chess rules (2023) issued by the World Chess Federation will be followed. If these rules conflict with the additional rules of this competition, the latter will prevail. The arbiter team has the final decision-making power. win: +1point, draw: +0.5point, lose: 0point. Rank of competitors is based on Individual Score. If the Individual Score of the players are equal, the following method is used to distinguish the ranking order 1. Match result Total Score of opponents. 2. Total Score of opponents. 3. Number of won games. 4. Number of won games using black. 5. Number of games using black.			
Registration method	:	Visit the official website of the competition: www.kiesicup.com for online registration.			
Payment method	:	1) Online payment on the official website. 2) Mail a cheque* to "Room G, 13th Floor, Lladro Centre, 72 Kai Yip Road, Kwun Tong - Hong Kong China Chess School" (Please indicate "Registration for KieSi Cup" on the envelope) 3) *If paying by cheque, please make it payable to "中國香港棋院有限公司" or "Hong Kong China Chess School Limited".			
Fees	:	Other groups Standard price: HKD 490 per person Senior college & university group Standard price: HKD 390 per person	Other groups Early bird offer: HKD 440 per person Senior college & university group Early bird offer: HKD 290 per person (Valid for registrations made before 12:00 pm on 17 March 2025)		
Deadline	:	24 March 2025 (Monday) (based on the postmark date)			
Awards	:	Please refer to the "Award Rules" on the back page.			

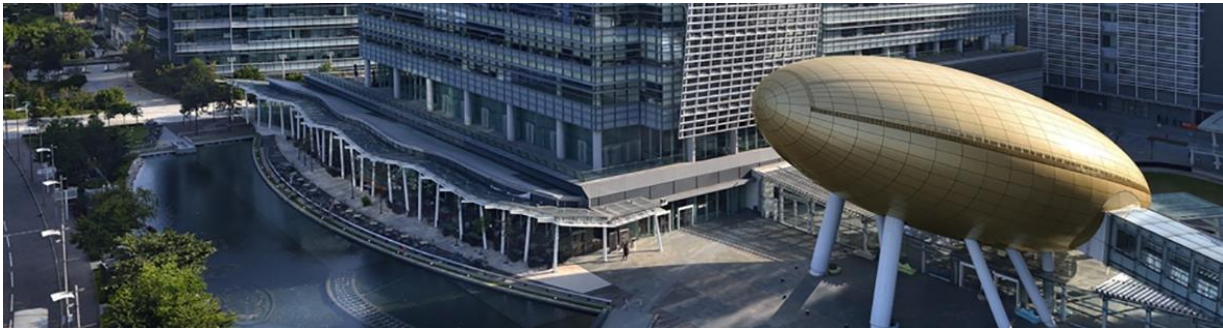
Remarks	<ol style="list-style-type: none"> 1. Participants in the Senior College & University Group can visit the official website: www.kiesicup.com on 2 April 2025 (Wednesday) to check the grouping, latest information, and competition instructions. 2. Participants in other groups can visit the official website: www.kiesicup.com on 2 April 2025 (Wednesday) to check the grouping, latest information, and competition instructions. 3. The venue opens for check-in 30 minutes before the start of competition. Participants who arrive more than 10 minutes late after the start of a game will be considered forfeiting. 4. The organizers reserve the right to merge groups, split groups, and increase the number of rounds based on the number of participants. 5. For some groups or tables, a chess clock may be used, and arbiters have the right to use it based on the actual competition situation. 6. Arbiters have the right to stop abnormal moves that unreasonably consume the opponent's time. The Competition Committee has the final decision-making authority, and participants may not object. 7. Participants are prohibited from using electronic devices during the game. Anyone found violating this rule may have their competition qualifications revoked. 8. Cheating, including "collusion" or "use of AI," is strictly prohibited. If discovered, the participant will be disqualified from the competition. • 9. Participants are expected to take good care of public property. The organizers reserve the right to seek compensation for any damage caused to competition materials, venues, or school properties. 10. If you have any inquiries, please call/Whatsapp the competition hotline at 6881-1991.
---------	---

Venue Introduction:

To provide participants with a higher quality and more comfortable competition venue, the "KieSi Cup", a Hong Kong inter-school chess tournament, will be relocated to the Hong Kong Science Park and the Hong Kong Youth Chess Academy^ . This move also sets a new record for hosting a local inter-school chess event in the largest single indoor space.

Hong Kong Science Park, located in Sha Tin, is well-known for its comfortable waterfront promenade and the distinctive "Golden Egg"(Charles K. Kao Auditorium) structure. The park is conveniently located, with a travel time of only 10 minutes from either Sha Tin MTR station or University MTR station by public transportation. The park also offers over 1,500 parking spaces for the convenience of drivers. In addition, with over 30 different types of restaurants, participants and accompanying parents can enjoy a convenient dining experience. The comprehensive facilities provided will undoubtedly ensure that participants have a memorable and enjoyable chess competition experience.

^ Senior College & University group's competitions will be held at the Hong Kong Youth Chess Academy.



Dining Facilities



Directions

Transportation tips:

- [For drivers]: You can use the parking lots P3, P2, and 19W at the Science Park.
- [From Sha Tin MTR Station]: Take Exit B and go to the minibus terminal at Pai Tau Street. Take minibus 27 or 27A.
- [From University MTR Station]: Take Exit B and take bus 272K.

Organizers:



Co-organizing:



Rules and Regulations

Ranking Awards

WeiQi XiangQi Chess	Senior College & University :	Other Groups :
	Champion: Trophy + Cash Prize of HKD \$1200	Champion: Trophy + Chess Course Voucher (Valued at HKD \$1000)
	First Runner-up: Trophy + Cash Prize of HKD \$800	First Runner-up: Trophy + Chess Course Voucher (Valued at HKD \$600)
	Second Runner-up: Trophy + Cash Prize of HKD \$500	Second Runner-up: Trophy + Chess Course Voucher (Valued at HKD \$300)
	4th to 8th place: Medal + Cash Prize of HKD \$300	4th to 8th place: Medal

School Team Awards (Primary School Groups)

School team awards are set up with gold, silver, and bronze awards to honor schools through student participation in the competition.

➤ * **Team Honor Award** (Calculated based on the total team points obtained by all participating students from the same school)

WeiQi				XiangQi / Chess	
6-round format		5-round format		7-round format	
Points	Team Points	Points	Team Points	Points	Team Points
5 - 6	5	5	5	5.5 - 7	5
4	4	4	4	4.5 - 5	4
3	3	3	3	3.5 - 4	3
2	2	2	2	2.5 - 3	2
0 - 1	1	0 - 1	1	0 - 2	1

"Best Female Chess Player" (Primary School Groups)

Purpose : The "Best Female Chess Player" award is established to encourage more female players to participate in the competition and demonstrate their skills.

System : The award will be given to the best-performing female player in seven groups

Seven groups: Go(Junior, Middle & Senior), XiangQi and Chess(Junior and Senior).

The calculation method for the award is based on comparing the "Total Score" and the "Opponent Score."

"Special Commendation Award" (Preschool Group)

Purpose : The "Special Commendation Award" is established to recognize participants who have displayed good attitude during the competition.

System : The referee and coaching team will select one award recipient in each age group based on the students' performance and attitude.

Procedure for Applying for Certificates



To support environmental protection, participants can visit the competition website www.kiesicup.com between 9 April 2025 and 20 April 2025, to fill in the required information for applying for participation certificates or ranking certificates. Late applications will not be accepted.

Applicants can collect the certificates from the selected branch of the Hong Kong China Chess Academy on or after 20 May 2025.